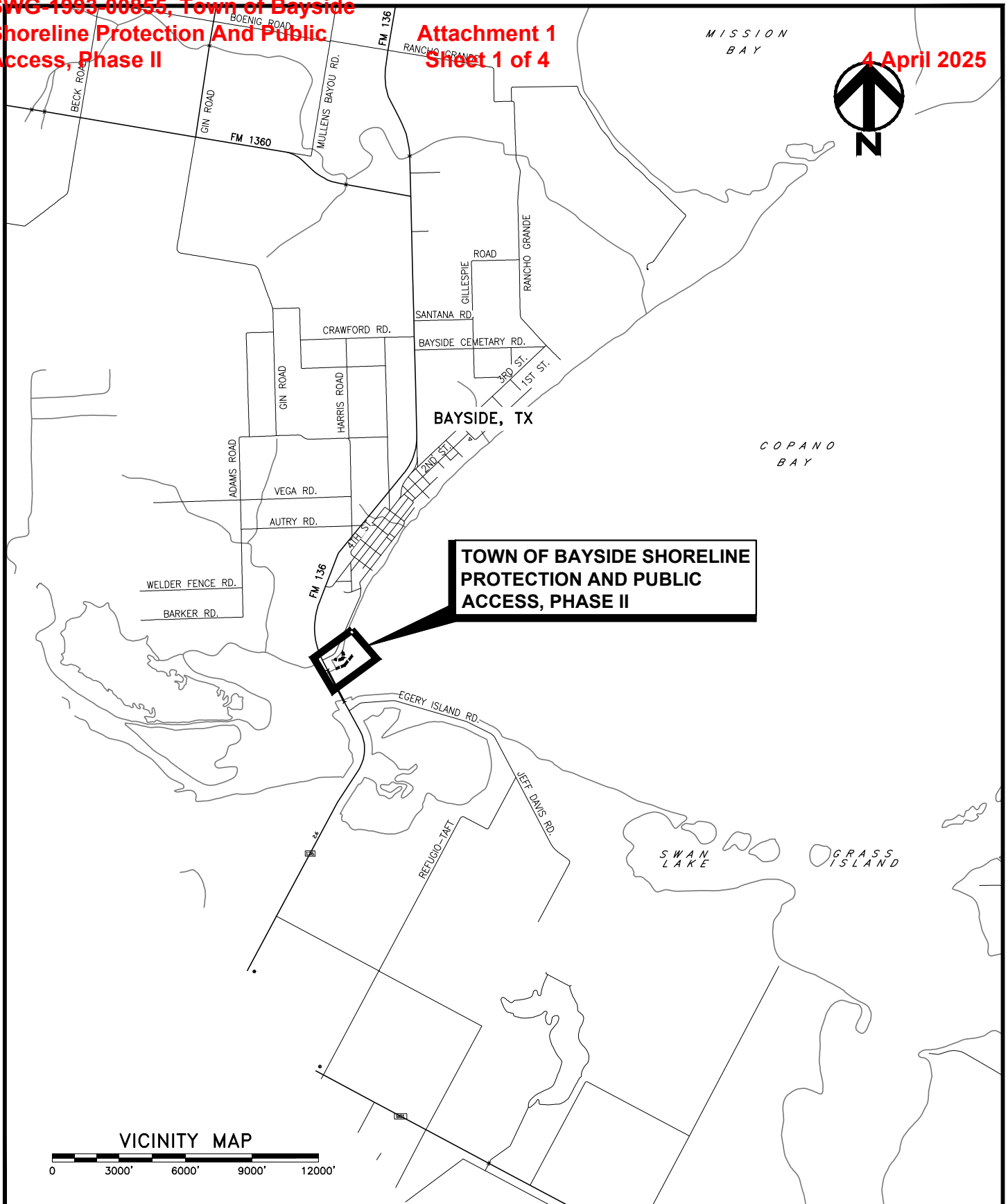


**SWG-1993-00855, Town of Bayside
Shoreline Protection And Public
Access, Phase II**

**Attachment 1
Sheet 1 of 4**

4 April 2025

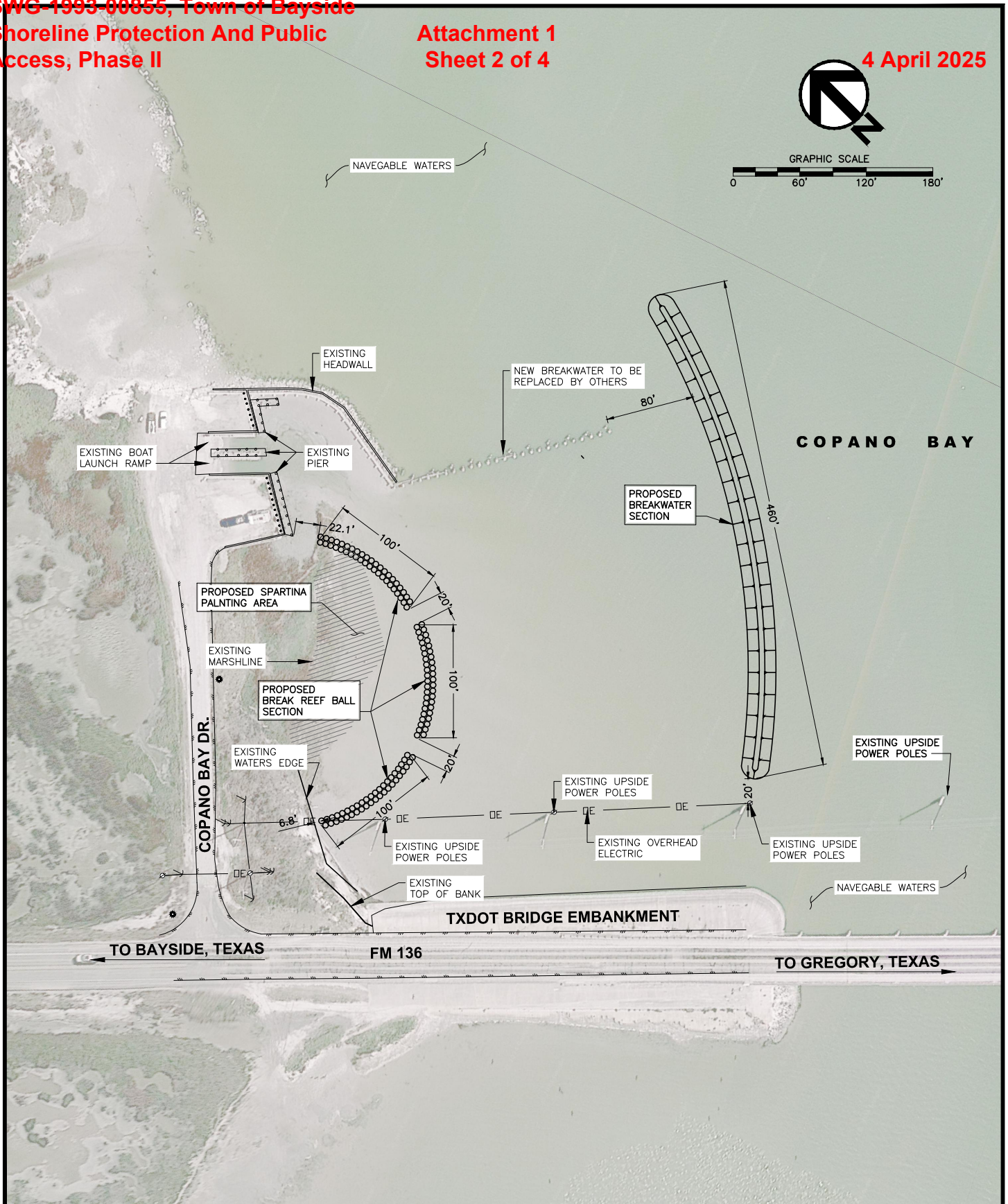


LJA ENGINEERING
TEXAS ENGINEERING FIRM F-1386

**COASTAL BEND BAYS & ESTUARIES
PROGRAMS, INC.**

**TOWN OF BAYSIDE SHORELINE PROTECTION
AND PUBLIC ACCESS, PHASE II**

SCALE:	AS NOTED
DRAWN BY:	EEJ
APPROVED BY:	JG
DATE:	01.08.2025
JOB NO.	C285-22113
SHEET NO.	1 OF 2

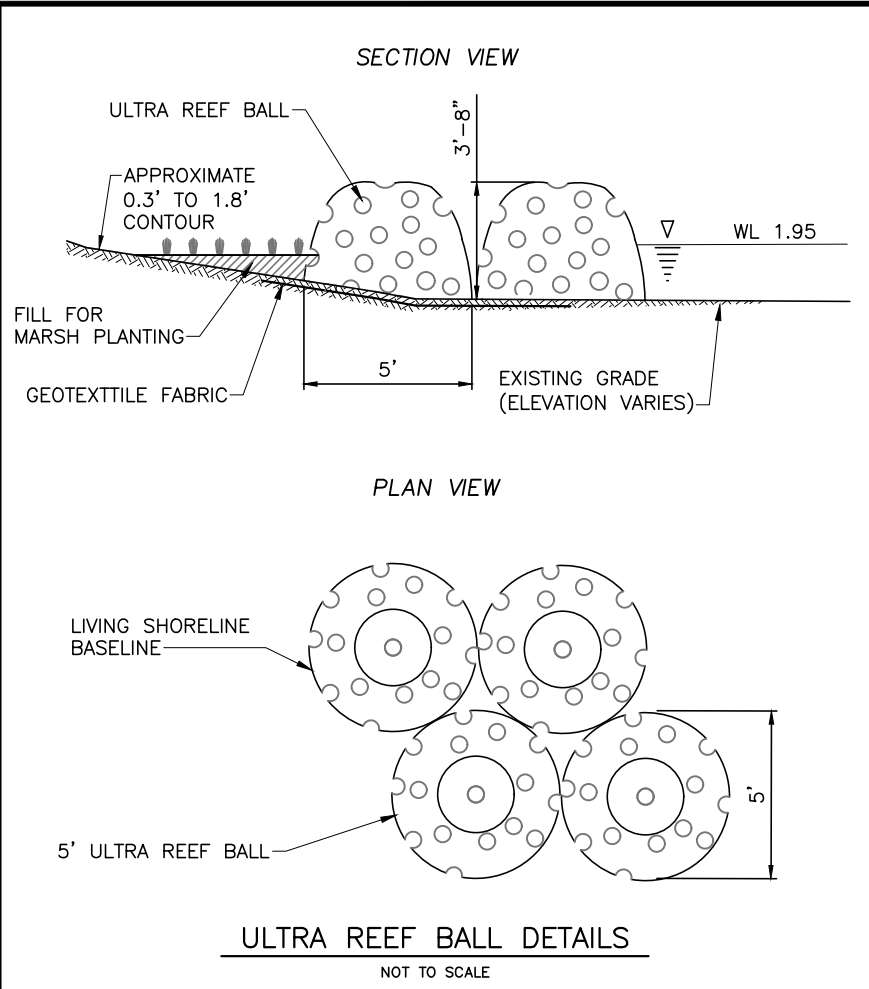
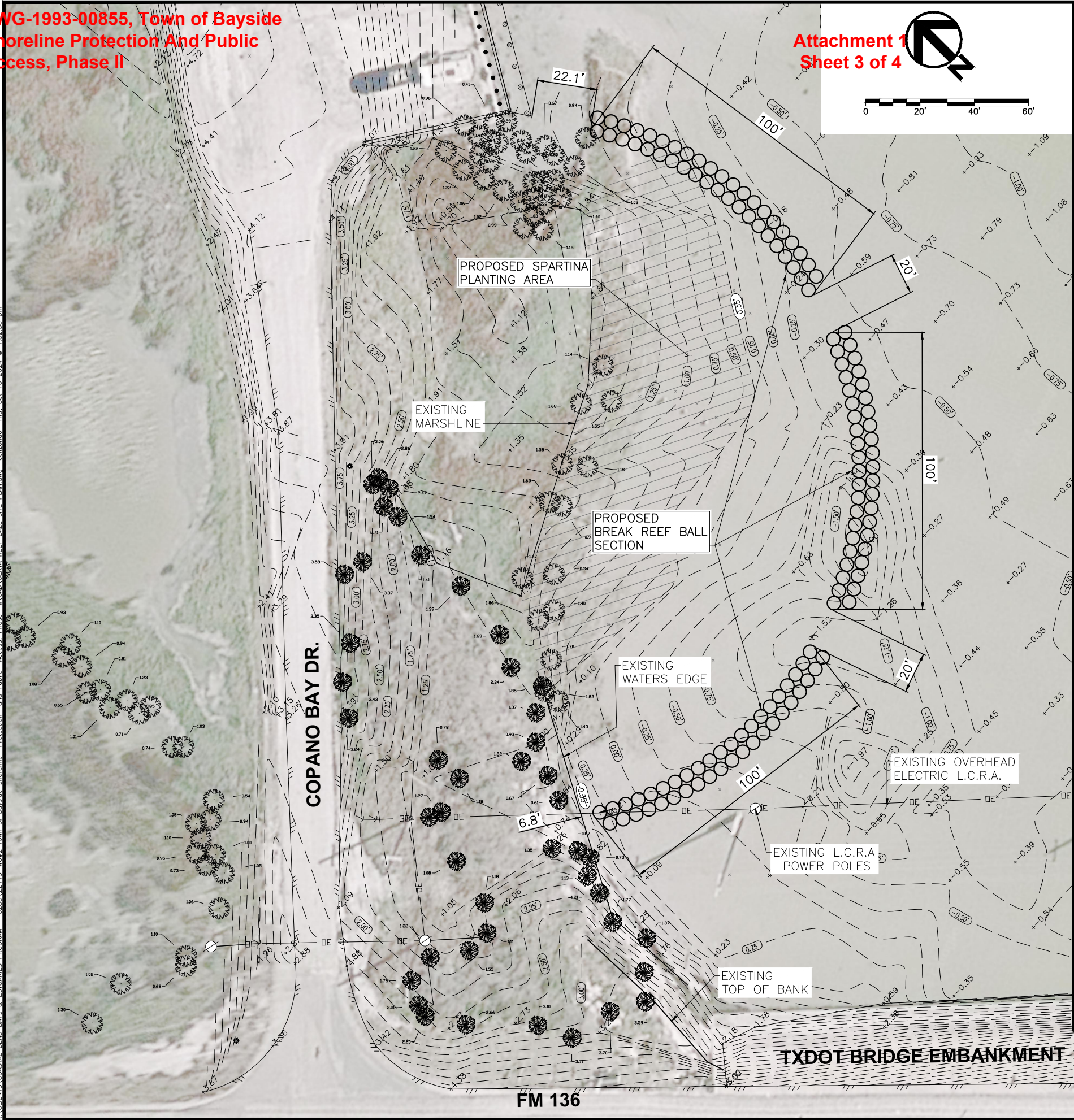
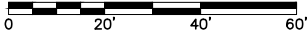


LJA ENGINEERING
TEXAS ENGINEERING FIRM F-1386

**COASTAL BEND BAYS & ESTUARIES
PROGRAMS, INC.**

**TOWN OF BAYSIDE SHORELINE PROTECTION
AND PUBLIC ACCESS, PHASE II**

SCALE: AS NOTED
DRAWN BY: EEJ
APPROVED BY: JG
DATE: 01.08.2025
JOB NO. C285-22113
SHEET NO. 2 OF 2



LEGEND:

	EDGE OF PAVEMENT		PROPOSED SPARTINA
	OVERHEAD ELECTRICITY		BRUSH
	EXISTING CONTOURS		SPAR
	POWER POLE		BOLLARD
	GUY WIRE		PILING
	IRON ROD FOUND		SPOT ELEVATION

ULTRA REEF BALL QUANTITIES:
V= 153 CY
A= 3,000 SQ. FT. = 0.06 ACRES

SPARTINA PLANTING QUANTITIES:
V= 1,035 CY
A= 9,325 SQ. FT. = 0.21 ACRES

PROJECT No.:
C285-22113.100

THIS DOCUMENT IS
RELEASED TEMPORARILY
FOR INTERIM REVIEW
FOR PURPOSES ONLY BY
YESENIA SINGLETON, P.E.
102398, ON 8/16/2024 AND
AND SHALL NOT BE USED FOR
CONSTRUCTION, BIDDING,
OR PERMIT PURPOSES.

LJA ENGINEERING
TBP# FIRM REG. NO. F-1386

COASTAL BEND
BAYS & ESTUARIES PROGRAM

COASTAL BEND BAYS & ESTUARIES PROGRAM, INC.
TOWN OF BAYSIDE SHORELINE PROTECTION
AND PUBLIC ACCESS, PHASE II

ULTRA REEF BALL SITE PLAN



COPANO BAY

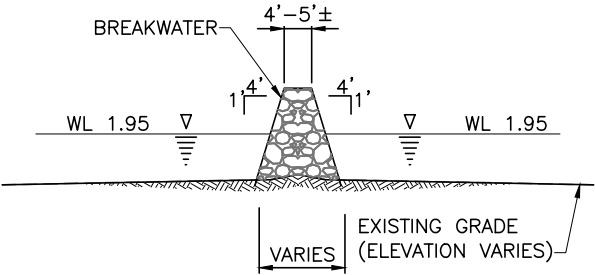
NAVIGABLE WATERS

PROPOSED
BREAKWATER
SECTION

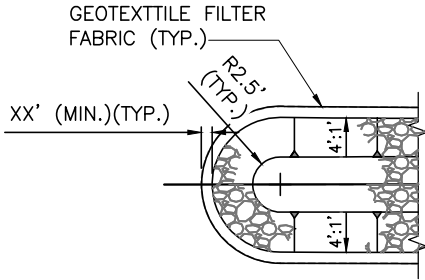
NEW BREAKWATER
TO BE REPLACED BY
PERMIT SW6-1993-00855

EXISTING L.C.R.A.
POWER POLES

SECTION VIEW



PLAN VIEW



BREAKWATER DETAILS

NOT TO SCALE

LEGEND:

- DE — OVERHEAD ELECTRICITY
- (13.00) — EXISTING CONTOURS
- ⊙ POWER POLE
- × 16.76 SPOT ELEVATION

BREAKWATER QUANTITIES:

V= 826 CY
A= 11,960 SQ. FT. = 0.27 ACRES

PROJECT No.:
C285-22113.100

THIS DOCUMENT IS
RELEASED TEMPORARILY
FOR INTERIM REVIEW
FOR PURPOSES ONLY BY
YESENIA SINGLETON, P.E.
102398, ON 8/16/2023 AND
AND SHALL NOT BE USED FOR
CONSTRUCTION, BIDDING,
OR PERMIT PURPOSES.



COASTAL BEND BAYS & ESTUARIES PROGRAM, INC.
TOWN OF BAYSIDE SHORELINE PROTECTION
AND PUBLIC ACCESS, PHASE II

BREAKWATER SITE PLAN